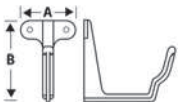
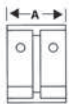
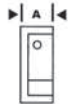
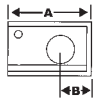
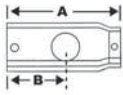
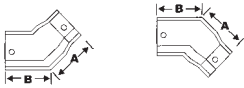
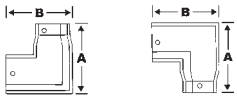




External

Internal



G46 Moulded Gutter		
Description	100mm x 75mm (4" x 3")	125mm x 100mm (5" x 4")
1829mm (6')	G4301	G5401
Angles		
Description	100mm x 75mm (4" x 3")	125mm x 100mm (5" x 4")
Square (90°) External	G4310	G5410
Square (90°) Internal	G4311	G5411
A	178mm	208mm
B	180mm	205mm
Obtuse (135°) External	G4312	G5412
Obtuse (135°) Internal	G4313	G5413
A	109mm	130mm
B	115mm	128mm
Outlets		
Description	100mm x 75mm (4" x 3")	125mm x 100mm (5" x 4")
Nozzle (Centre Drop)	A = 65mm (2.5"), B = 5mm (3") (100mm (4") & 100mm x 75mm (4" x 3") outlets are also available)	
	G4320A	G5420A
	G4320B	G5420B
A	250mm	252mm
B	126mm	126mm
Dropend External	G4321A	G5421A
	G4321B	G5421B
A	170mm	172mm
B	65mm	65mm
Dropend Internal	G4322A	G5422A
	G4322B	G5422B
A	178mm	181mm
B	65mm	65mm
Stopends		
Description	100mm x 75mm (4" x 3")	125mm x 100mm (5" x 4")
External	G4330	G5430
A	60mm	60mm
Internal	G4331	G5431
A	45mm	58mm
Union Clip		
Description	100mm x 75mm (4" x 3")	125mm x 100mm (5" x 4")
Union Clip	G4335	G5435
A	100mm	100mm
Fascia Bracket		
Description	100mm x 75mm (4" x 3")	125mm x 100mm (5" x 4")
Fascia Bracket	G4340	G5440
A	75mm	75mm
B	85mm	110mm

Galvanised Steel Brackets

Description	100mm x 75mm (4" x 3")	125mm x 100mm (5" x 4")
Top Fixing Rafter Bracket	G4341	G5441
A	300mm	300mm
Side Fixing Rafter Bracket	G4342	G5442
A	240mm	240mm
Rise & Fall Bracket (Threaded Stem 160mm)	G4343	G5443
A	300mm	300mm

